

HS1100 MediaSignage Player

The Hughes HS1100 is an advanced digital media player designed to provide ultra-high definition video and image playback as part of a digital communication solution.

The player offers HD resolutions of 4K and 1080p. Capable of storing more than 200 hours of HD video, the player can be configured to play in remote locations with a wide range of content and layouts.

The Hughes HS1100 arrives as a ready-to-install appliance. Using a simple setup wizard, the customer connects the player to the network and to the Hughes MediaSignage Server. Once connected, the player receives the necessary content and information to assume the playback role it is assigned. Players can be moved from location to location, updating to the proper information each time.

The Hughes HS1100 player supports a range of template designs and layouts—providing the ability to play video, still images, and scrolling data feeds simultaneously. The player also supports touchscreens and can be turned into a kiosk simply by changing the content and layout assignments.

The player is designed for reliability and will continue to play assigned content, even if the network connection is disabled.

The Hughes HS1100 is a core component of these Hughes solution packages:

- Breakroom TV
- Digital Menu Boards
- Digital Concierge/Associate
- Digital Promo Board
- Lobby/Waiting Area TV
- Video Walls
- and much more...



Feature Highlights

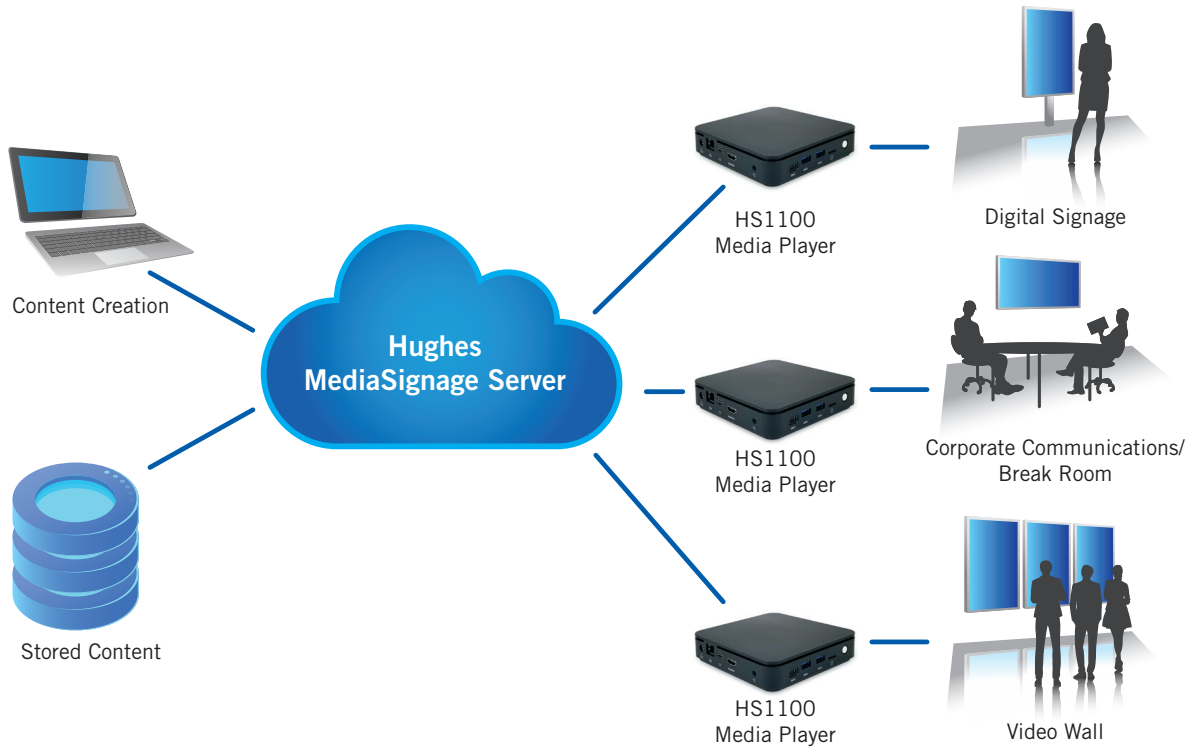
- Intel® Celeron™ N4100 processor
- Intel Gemini Lake platform (SOC)
- 4K and 1080p ready
- 4GB DDR4 RAM
- 240 GB SSD memory
- HDMI
- Dual-band Wi-Fi/Gigabit LAN
- OS Support: Windows 10 IOT
- Small form factor (5.5" W x 5.5" D x 1.25" H, 7.5 oz)
- Applications: Hughes MediaSignage Content Management System powering enterprise-grade digital signage, self-service kiosks, and video walls



Technical Specifications

Processor	Intel Celeron® N4100 2.4 GHz 4Core	Back Panel	1 x HDMI port 1 x USB Type-C port (Optional: for Graphics) 1 x LAN port 1 x 3.5mm audio jack (Also Support S/PDIF) 1 x DC IN Jack
Chipset	Intel Gemini Lake Platform (SOC)	OS Support	Windows 10 IOT
Graphics	Intel UHD 600 Graphics 1 x HDMI, supporting a maximum resolution of 4K @ 30 Hz	Environment	Operating Temperature: 0 to +55 C MTBF: 50,000 Hours RoHS Compliance
Memory	4 GB DDR4 SO-DIMM		
Network	Gigabit (10/100/1000 Mb/s) LAN 802.11 ac/n Dual-Band Wi-Fi		
Storage	240 GB SSD		
Audio	1 x 3.5mm analog stereo audio jacks		

Hughes MediaSignage Infrastructure



For additional information, please call 1-888-440-7126 or visit business.hughes.com/signage.